

domicile
EXTENDED
WARRANTY

THE DOMICILE EXTENDED WARRANTY IS A COMMITMENT TO OUR WORK, OUR TEAM AND MOST IMPORTANTLY OUR CUSTOMERS

A REMARKABLE 4-YEAR WARRANTY LIKE NO OTHER

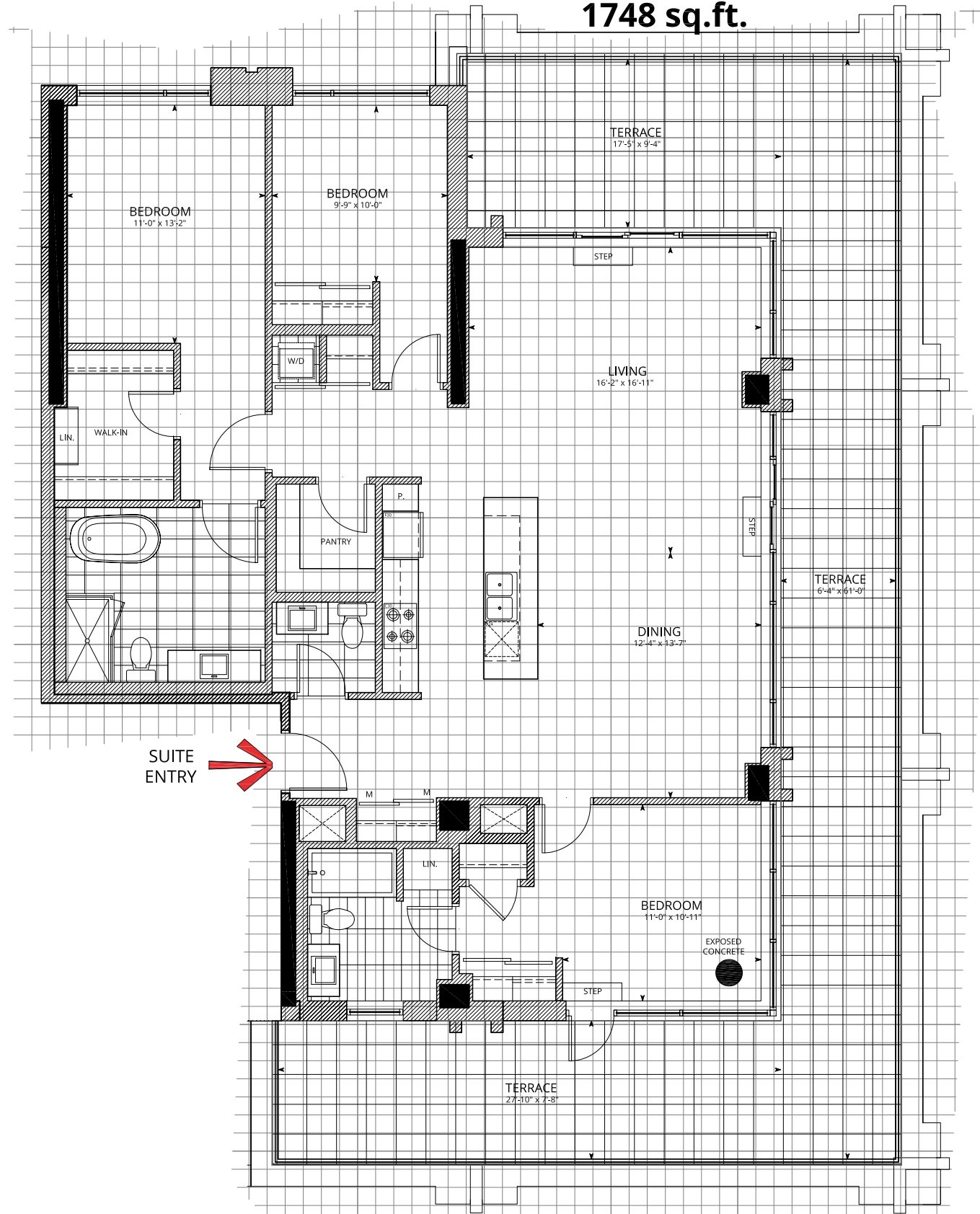
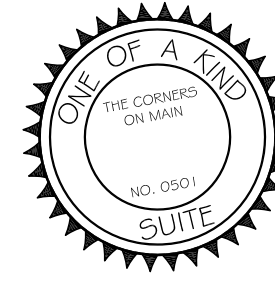
THE SAME PROTECTION AS THE STANDARD WARRANTY, BUT FOR AT LEAST TWICE AS LONG

INCLUDED IN THE PRICE OF YOUR NEW HOME

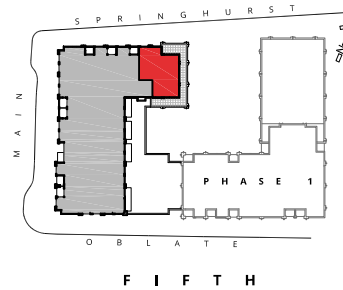
THE HAVELOCK

WITH TERRACE

1748 sq.ft.



SUITE ENTRY →



2 KEY PLAN
T17.1

1 THE HAVELOCK
T17.1

SUITES
501

FACTS:
THREE BEDROOM
SUITE AREA: 1748 sq.ft.
TERRACE AREA: 763 sq.ft.
TOTAL AREA: 2511 sq.ft.

- LEGEND:
- PARTY WALLS, INTERIOR/EXTERIOR WALLS AND PLUMBING WALLS
 - STRUCTURAL ELEMENTS
 - WASHER/DRYER
 - COMBINATION WASHER/DRYER
 - HEAT PUMP/ HEAT RECOVERY VENTILATOR (HRV)
 - TUB
 - FREESTANDING TUB
 - SHOWER
 - BATHROOM VANITY
 - PEDESTAL SINK
 - WATER CLOSET
 - SINGLE BOWL UNDERMOUNT KITCHEN SINK
 - DOUBLE BOWL UNDERMOUNT KITCHEN SINK
 - DISHWASHER D24-24" WIDE D18-18" WIDE
 - COOKTOP WITH OVEN BELOW C30-30" WIDE C24-24" WIDE
 - REFRIGERATOR F30-30" WIDE F24-24" WIDE
 - P. PANTRY
 - LIN. LINEN CLOSET
 - M MIRRORED PANEL DOOR
 - DOUBLE ROD AND SHELF
 - SINGLE ROD AND SHELF
 - TILED FLOOR 12" x 24"
 - WINDOW
 - PRIVACY SCREEN



A PROGRAM BY ENBRIDGE GAS DISTRIBUTION

- AN INTEGRATED DESIGN PROCESS WHERE BUILDING SCIENCE EXPERTS FROM ENBRIDGE AND DOMICILE'S DESIGN TEAM WORKED TOGETHER TO IDENTIFY THE OPTIMAL MIX OF DESIGN ELEMENTS AND TECHNOLOGIES TO MAXIMIZE THE ENVIRONMENTAL PERFORMANCE OF THIS PROJECT
- THE RESULT WILL BE A BUILDING WITH ENERGY SAVINGS THAT EXCEEDS THE ONTARIO BUILDING CODE BY AT LEAST 15%
- AFTER THE BUILDING IS COMPLETE, A COMMISSIONING REVIEW OF THE BUILDING IS CONDUCTED TO ENSURE ALL SYSTEMS AND TECHNOLOGIES ARE WORKING AS INTENDED

Actual usable space may vary slightly from stated floor area
All dimensions are approximate E. & O.E.

DESIGN NOTES/QUESTIONS:

domicile



DRAWING TITLE:
LAYOUT FEATURES
THE HAVELOCK

OPTION: STANDARD DATE: 2017.07.31

REV: 03 DRAWING NO. PHASE 2 T17.1