



THE DOMICILE EXTENDED WARRANTY IS A COMMITMENT TO OUR WORK, OUR TEAM AND MOST IMPORTANTLY OUR CUSTOMERS

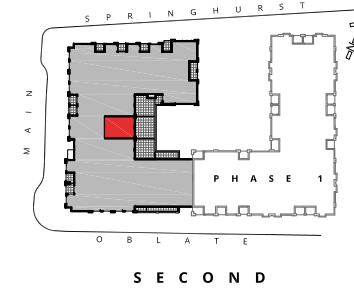
A REMARKABLE 4-YEAR WARRANTY LIKE NO OTHER

THE SAME PROTECTION AS THE STANDARD WARRANTY, BUT FOR AT LEAST TWICE AS LONG

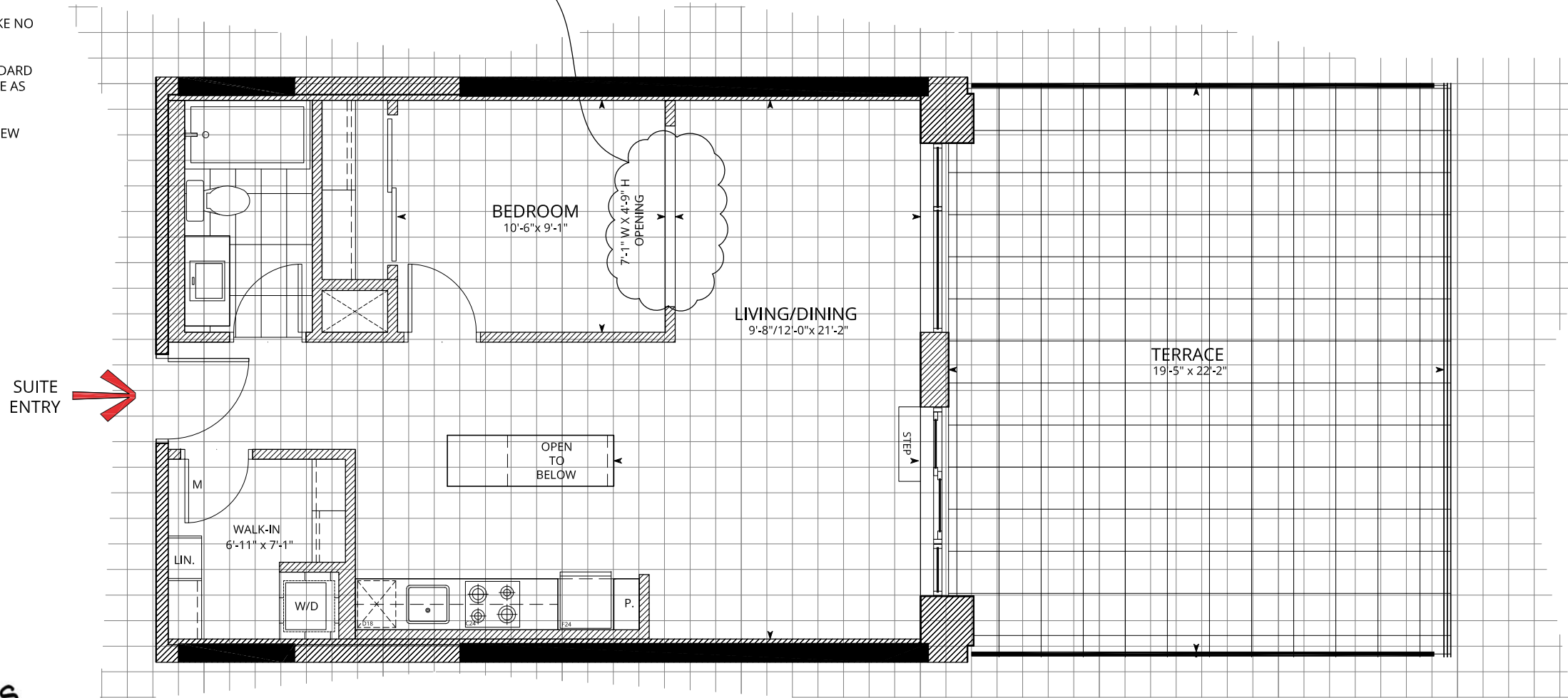
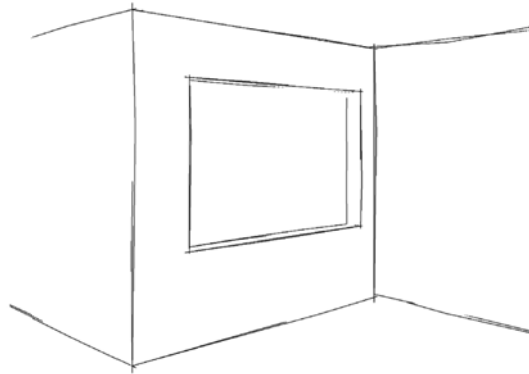
INCLUDED IN THE PRICE OF YOUR NEW HOME

THE BRIGHTON

WITH TERRACE
693 sq.ft.



2 KEY PLAN
T6.1



A PROGRAM BY ENBRIDGE GAS DISTRIBUTION

- AN INTEGRATED DESIGN PROCESS WHERE BUILDING SCIENCE EXPERTS FROM ENBRIDGE AND DOMICILE'S DESIGN TEAM WORKED TOGETHER TO IDENTIFY THE OPTIMAL MIX OF DESIGN ELEMENTS AND TECHNOLOGIES TO MAXIMIZE THE ENVIRONMENTAL PERFORMANCE OF THIS PROJECT
- THE RESULT WILL BE A BUILDING WITH ENERGY SAVINGS THAT EXCEEDS THE ONTARIO BUILDING CODE BY AT LEAST 15%
- AFTER THE BUILDING IS COMPLETE, A COMMISSIONING REVIEW OF THE BUILDING IS CONDUCTED TO ENSURE ALL SYSTEMS AND TECHNOLOGIES ARE WORKING AS INTENDED

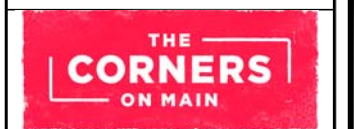
Actual usable space may vary slightly from stated floor area
All dimensions are approximate E. & O.E.

SUITES 217

FACTS:
ONE BEDROOM

SUITE AREA: 693 sq.ft.
TERRACE AREA: 425 sq.ft.
TOTAL AREA: 1118 sq.ft.

- LEGEND:**
- PARTY WALLS, INTERIOR/EXTERIOR WALLS AND PLUMBING WALLS
 - STRUCTURAL ELEMENTS
 - WASHER/DRYER
 - COMBINATION WASHER/DRYER
 - HEAT PUMP/ HEAT RECOVERY VENTILATOR (HRV)
 - TUB
 - FREESTANDING TUB
 - SHOWER
 - BATHROOM VANITY
 - PEDESTAL SINK
 - WATER CLOSET
 - SINGLE BOWL UNDERMOUNT KITCHEN SINK
 - DOUBLE BOWL UNDERMOUNT KITCHEN SINK
 - DISHWASHER D24-24" WIDE D18-18" WIDE
 - COOKTOP WITH OVEN BELOW C30-30" WIDE C24-24" WIDE
 - REFRIGERATOR F30-30" WIDE F24-24" WIDE
 - P. PANTRY
 - LIN. LINEN CLOSET
 - M MIRRORED PANEL DOOR
 - DOUBLE ROD AND SHELF
 - SINGLE ROD AND SHELF
 - TILED FLOOR 12" x 24"
 - WINDOW
 - PRIVACY SCREEN



DRAWING TITLE:
LAYOUT FEATURES
THE BRIGHTON

OPTION: STANDARD DATE: 2017.09.20

REV: 03 DRAWING NO. PHASE 2 T6.1

DESIGN NOTES/QUESTIONS:

domicile
EXTENDED
WARRANTY

THE DOMICILE EXTENDED WARRANTY IS A COMMITMENT TO OUR WORK, OUR TEAM AND MOST IMPORTANTLY OUR CUSTOMERS

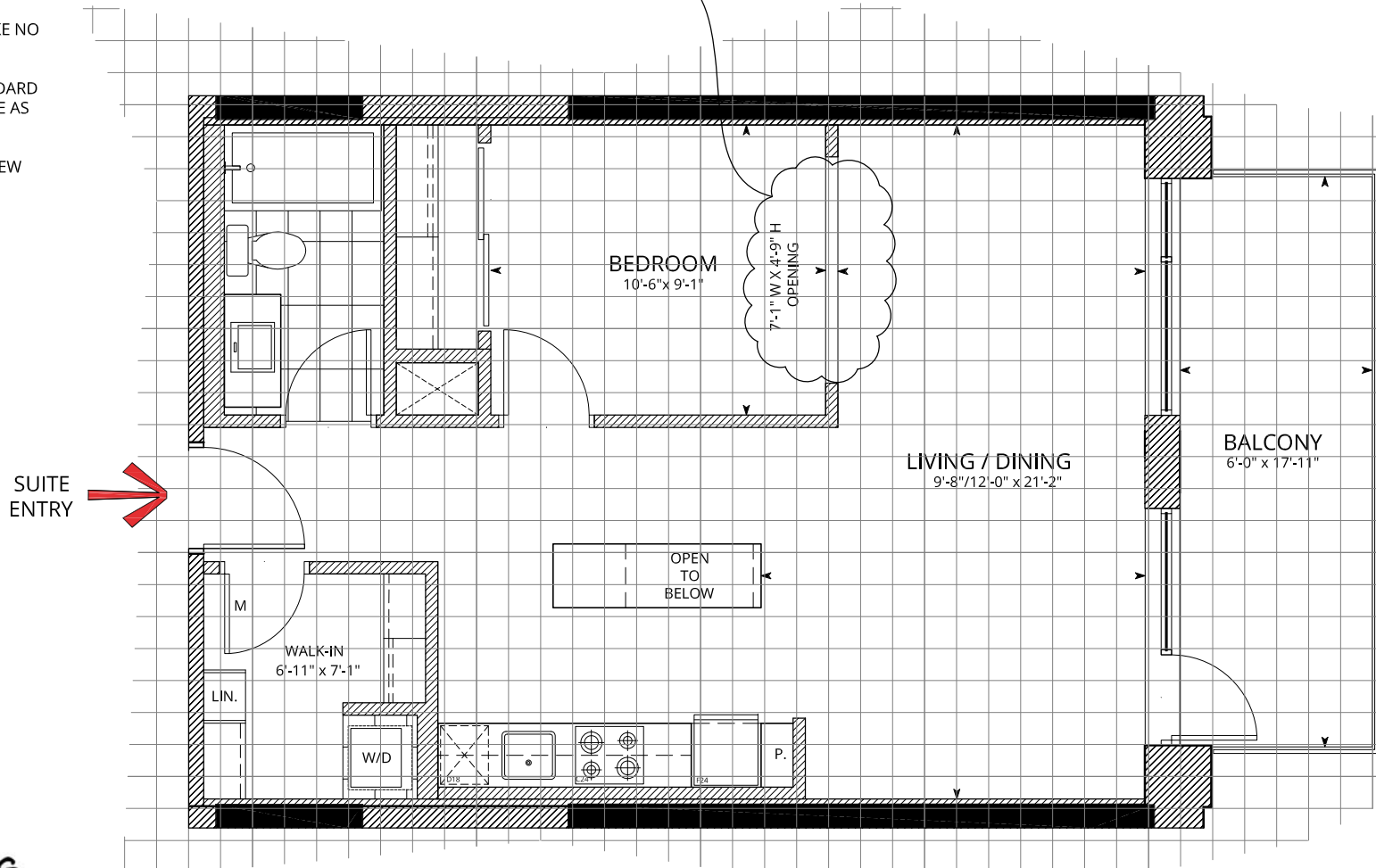
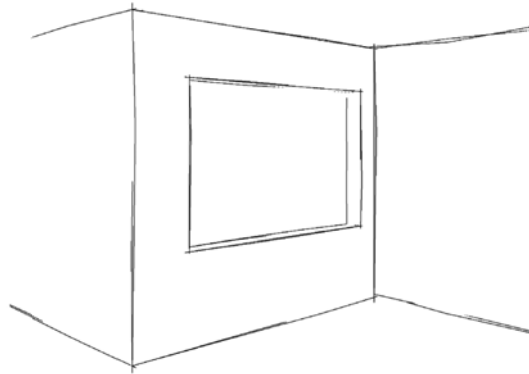
A REMARKABLE 4-YEAR WARRANTY LIKE NO OTHER

THE SAME PROTECTION AS THE STANDARD WARRANTY, BUT FOR AT LEAST TWICE AS LONG

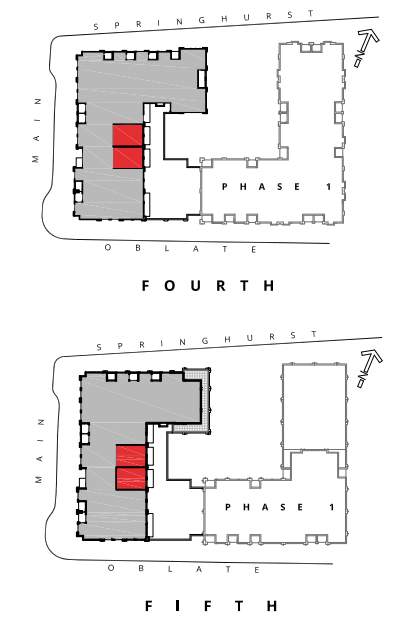
INCLUDED IN THE PRICE OF YOUR NEW HOME

THE BRIGHTON

WITH BALCONY
693 sq.ft.



1 THE BRIGHTON
T7.1



2 KEY PLAN
T7.1

SUITES
412, 413,
510, 511

FACTS:
ONE BEDROOM
SUITE AREA: 693 sq.ft.
BALCONY AREA: 107 sq.ft.
TOTAL AREA: 800 sq.ft.

- LEGEND:
- PARTY WALLS, INTERIOR/EXTERIOR WALLS AND PLUMBING WALLS
 - STRUCTURAL ELEMENTS
 - WASHER/DRYER
 - COMBINATION WASHER/DRYER
 - HEAT PUMP/ HEAT RECOVERY VENTILATOR (HRV)
 - TUB
 - FREESTANDING TUB
 - SHOWER
 - BATHROOM VANITY
 - PEDESTAL SINK
 - WATER CLOSET
 - SINGLE BOWL UNDERMOUNT KITCHEN SINK
 - DOUBLE BOWL UNDERMOUNT KITCHEN SINK
 - DISHWASHER
D24-24" WIDE
D18-18" WIDE
 - COOKTOP WITH OVEN BELOW
C30-30" WIDE
C24-24" WIDE
 - REFRIGERATOR
F30-30" WIDE
F24-24" WIDE
 - PANTRY
 - LINEN CLOSET
 - MIRRORED PANEL DOOR
 - DOUBLE ROD AND SHELF
 - SINGLE ROD AND SHELF
 - TILED FLOOR
12" x 24"
 - WINDOW
 - PRIVACY SCREEN



A PROGRAM BY ENBRIDGE GAS DISTRIBUTION

- AN INTEGRATED DESIGN PROCESS WHERE BUILDING SCIENCE EXPERTS FROM ENBRIDGE AND DOMICILE'S DESIGN TEAM WORKED TOGETHER TO IDENTIFY THE OPTIMAL MIX OF DESIGN ELEMENTS AND TECHNOLOGIES TO MAXIMIZE THE ENVIRONMENTAL PERFORMANCE OF THIS PROJECT
- THE RESULT WILL BE A BUILDING WITH ENERGY SAVINGS THAT EXCEEDS THE ONTARIO BUILDING CODE BY AT LEAST 15%
- AFTER THE BUILDING IS COMPLETE, A COMMISSIONING REVIEW OF THE BUILDING IS CONDUCTED TO ENSURE ALL SYSTEMS AND TECHNOLOGIES ARE WORKING AS INTENDED

Actual usable space may vary slightly from stated floor area
All dimensions are approximate E. & O.E.

DESIGN NOTES/QUESTIONS:

domicile



DRAWING TITLE:
LAYOUT FEATURES
THE BRIGHTON

OPTION: STANDARD DATE: 2017.09.20

REV: 03 DRAWING NO. PHASE 2 T7.1