

domicile
EXTENDED
WARRANTY

THE DOMICILE EXTENDED WARRANTY IS A COMMITMENT TO OUR WORK, OUR TEAM AND MOST IMPORTANTLY OUR CUSTOMERS

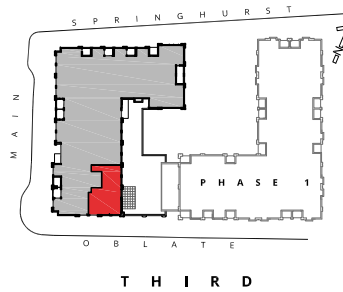
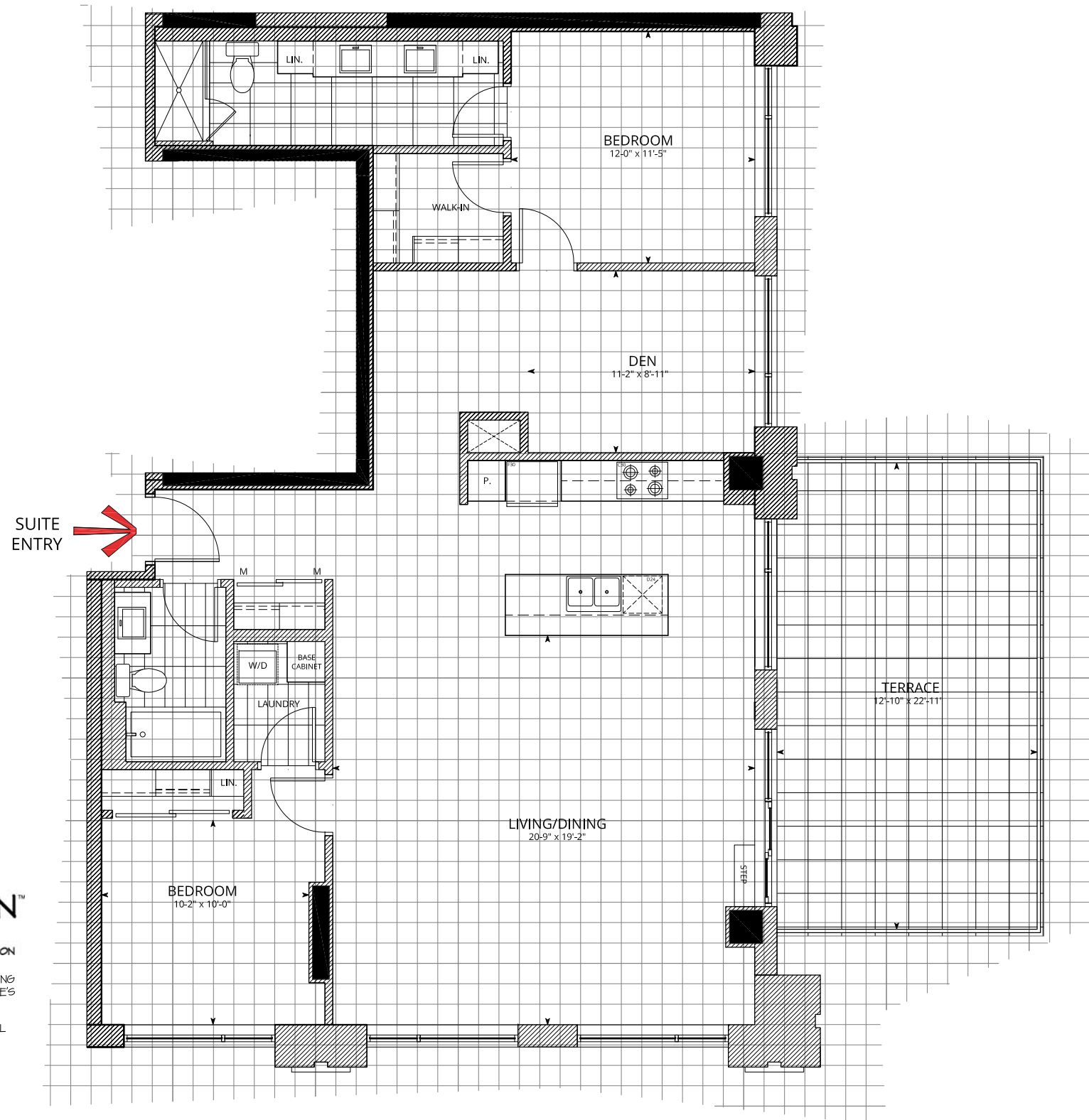
A REMARKABLE 4-YEAR WARRANTY LIKE NO OTHER

THE SAME PROTECTION AS THE STANDARD WARRANTY, BUT FOR AT LEAST TWICE AS LONG

INCLUDED IN THE PRICE OF YOUR NEW HOME

THE HERRIDGE

WITH TERRACE
1494 sq.ft.



A PROGRAM BY ENBRIDGE GAS DISTRIBUTION

- AN INTEGRATED DESIGN PROCESS WHERE BUILDING SCIENCE EXPERTS FROM ENBRIDGE AND DOMICILE'S DESIGN TEAM WORKED TOGETHER TO IDENTIFY THE OPTIMAL MIX OF DESIGN ELEMENTS AND TECHNOLOGIES TO MAXIMIZE THE ENVIRONMENTAL PERFORMANCE OF THIS PROJECT
- THE RESULT WILL BE A BUILDING WITH ENERGY SAVINGS THAT EXCEEDS THE ONTARIO BUILDING CODE BY AT LEAST 15%
- AFTER THE BUILDING IS COMPLETE, A COMMISSIONING REVIEW OF THE BUILDING IS CONDUCTED TO ENSURE ALL SYSTEMS AND TECHNOLOGIES ARE WORKING AS INTENDED

Actual usable space may vary slightly from stated floor area
All dimensions are approximate E. & O.E.

SUITES

311

FACTS:

TWO BEDROOM + DEN

SUITE AREA: 1494 sq.ft.

TERRACE AREA: 290 sq.ft.

TOTAL AREA: 1784 sq.ft.

LEGEND:

- PARTY WALLS, INTERIOR/EXTERIOR WALLS AND PLUMBING WALLS
- STRUCTURAL ELEMENTS
- WASHER/DRYER
- COMBINATION WASHER/DRYER
- HEAT PUMP/ HEAT RECOVERY VENTILATOR (HRV)
- TUB
- FREESTANDING TUB
- SHOWER
- BATHROOM VANITY
- PEDESTAL SINK
- WATER CLOSET
- SINGLE BOWL UNDERMOUNT KITCHEN SINK
- DOUBLE BOWL UNDERMOUNT KITCHEN SINK
- DISHWASHER
D24-24" WIDE
D18-18" WIDE
- COOKTOP WITH OVEN BELOW
C30-30" WIDE
C24-24" WIDE
- REFRIGERATOR
F30-30" WIDE
F24-24" WIDE
- PANTRY
- LINEN CLOSET
- MIRRORED PANEL DOOR
- DOUBLE ROD AND SHELF
- SINGLE ROD AND SHELF
- TILED FLOOR
12" x 24"
- WINDOW
- PRIVACY SCREEN

DESIGN NOTES/QUESTIONS:

domicile



DRAWING TITLE:
LAYOUT FEATURES
THE HERRIDGE

OPTION: STANDARD DATE: 2017.09.20

REV: 04 DRAWING NO. PHASE 2 T12.1

domicile
EXTENDED
WARRANTY

THE DOMICILE EXTENDED WARRANTY IS A COMMITMENT TO OUR WORK, OUR TEAM AND MOST IMPORTANTLY OUR CUSTOMERS

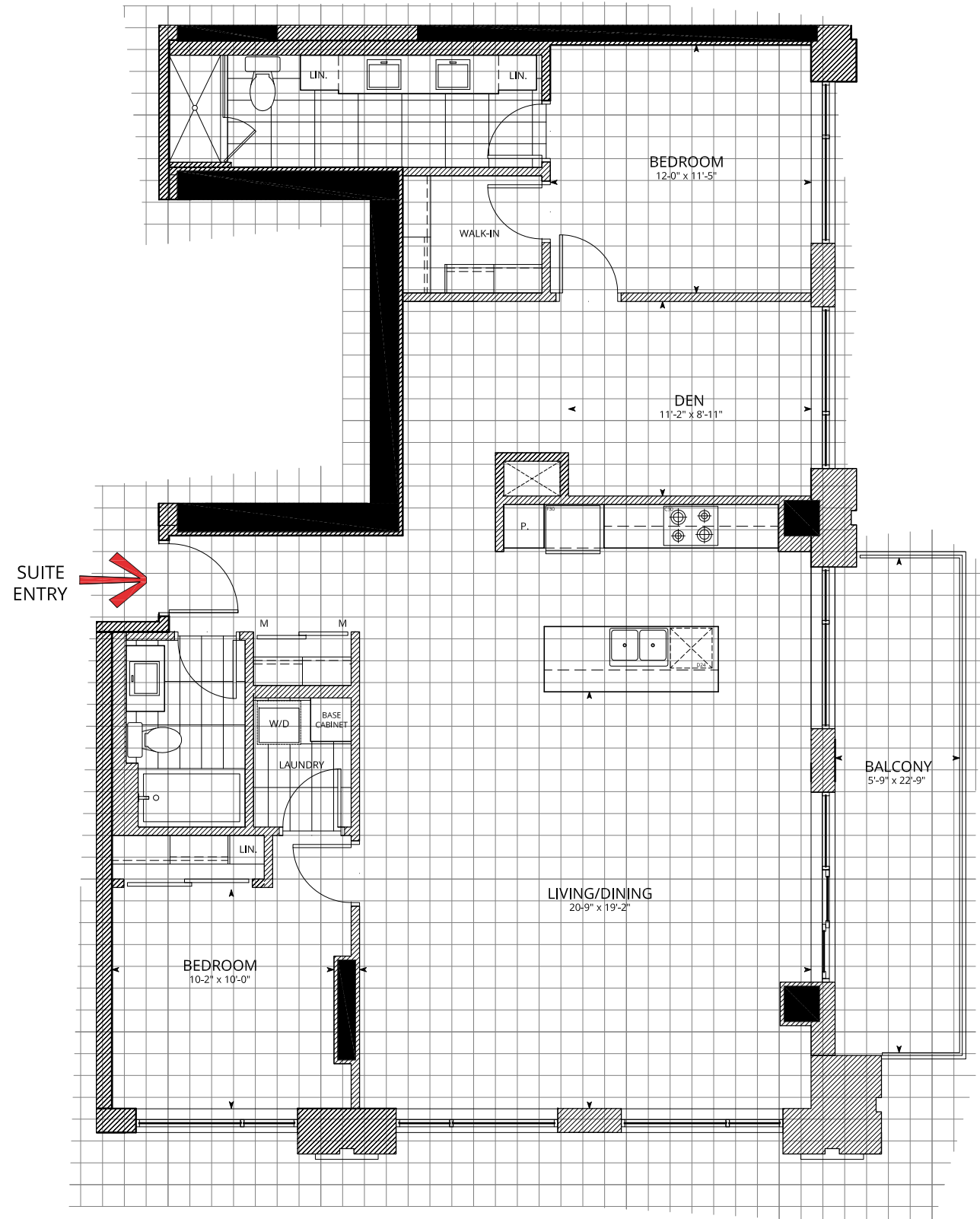
A REMARKABLE 4-YEAR WARRANTY LIKE NO OTHER

THE SAME PROTECTION AS THE STANDARD WARRANTY, BUT FOR AT LEAST TWICE AS LONG

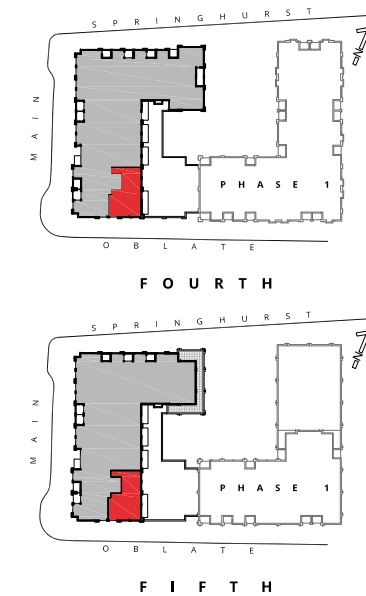
INCLUDED IN THE PRICE OF YOUR NEW HOME

THE HERRIDGE

WITH BALCONY
1494 sq.ft.



1 THE HERRIDGE
T13.1



2 KEY PLAN
T13.1



A PROGRAM BY ENBRIDGE GAS DISTRIBUTION

- AN INTEGRATED DESIGN PROCESS WHERE BUILDING SCIENCE EXPERTS FROM ENBRIDGE AND DOMICILE'S DESIGN TEAM WORKED TOGETHER TO IDENTIFY THE OPTIMAL MIX OF DESIGN ELEMENTS AND TECHNOLOGIES TO MAXIMIZE THE ENVIRONMENTAL PERFORMANCE OF THIS PROJECT
- THE RESULT WILL BE A BUILDING WITH ENERGY SAVINGS THAT EXCEEDS THE ONTARIO BUILDING CODE BY AT LEAST 25%
- AFTER THE BUILDING IS COMPLETE, A COMMISSIONING REVIEW OF THE BUILDING IS CONDUCTED TO ENSURE ALL SYSTEMS AND TECHNOLOGIES ARE WORKING AS INTENDED

Actual usable space may vary slightly from stated floor area
All dimensions are approximate E. & O.E.

SUITES

411, 509

FACTS:

TWO BEDROOM + DEN

SUITE AREA: 1494 sq.ft.

BALCONY AREA: 129 sq.ft.

TOTAL AREA: 1623 sq.ft.

LEGEND:

- PARTY WALLS, INTERIOR/EXTERIOR WALLS AND PLUMBING WALLS
- STRUCTURAL ELEMENTS
- WASHER/DRYER
- COMBINATION WASHER/DRYER
- HEAT PUMP/ HEAT RECOVERY VENTILATOR (HRV)
- TUB
- FREESTANDING TUB
- SHOWER
- BATHROOM VANITY
- PEDESTAL SINK
- WATER CLOSET
- SINGLE BOWL UNDERMOUNT KITCHEN SINK
- DOUBLE BOWL UNDERMOUNT KITCHEN SINK
- DISHWASHER
D24-24" WIDE
D18-18" WIDE
- COOKTOP WITH OVEN BELOW
C30-30" WIDE
C24-24" WIDE
- REFRIGERATOR
F30-30" WIDE
F24-24" WIDE
- PANTRY
- LINEN CLOSET
- MIRRORED PANEL DOOR
- DOUBLE ROD AND SHELF
- SINGLE ROD AND SHELF
- TILED FLOOR
12" x 24"
- WINDOW
- PRIVACY SCREEN

DESIGN NOTES/QUESTIONS:

domicile



DRAWING TITLE:
LAYOUT FEATURES
THE HERRIDGE

OPTION: STANDARD DATE: 2017.09.20

REV: 04 DRAWING NO. PHASE 2 T13.1